

THE MIGHTY MAHARASHTRA FISHERIES PROFILE



'FATHER OF INDIAN NAVY'

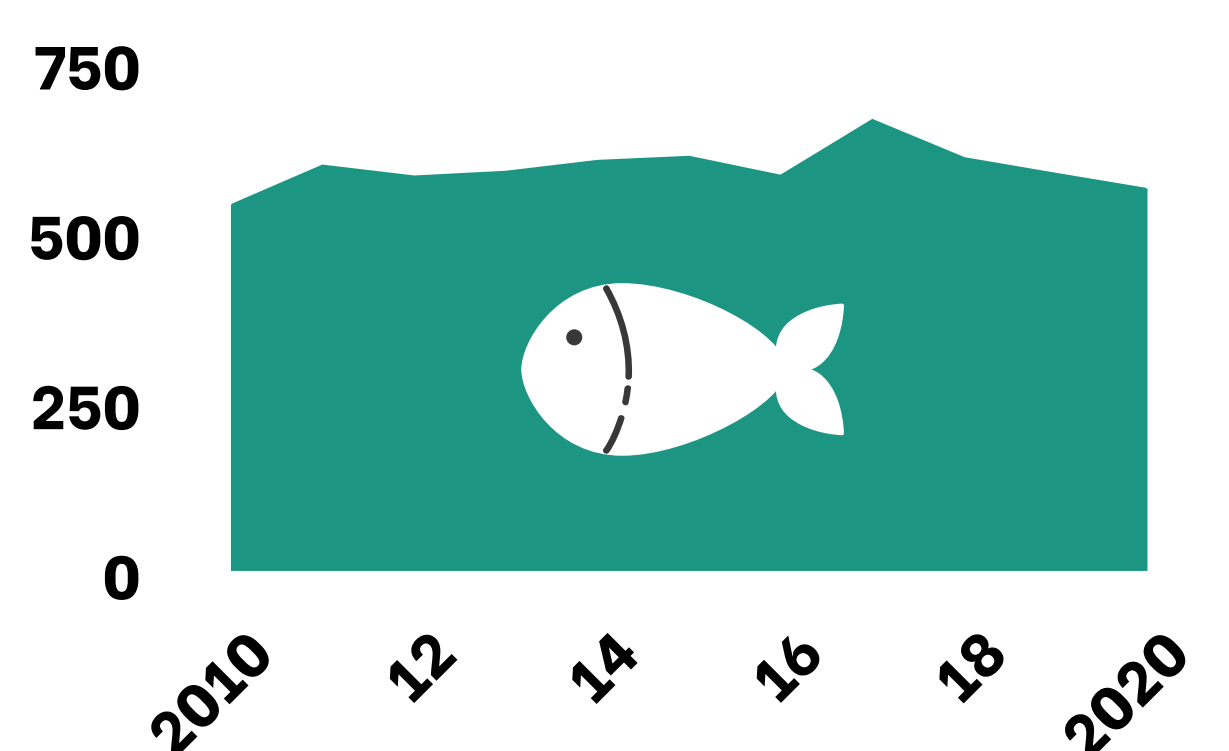
CHHATRAPATI SHIVAJI MAHARAJ IN 17TH CENTURY BUILT A STRONG NAVAL PRESENCE ACROSS THE COAST OF KONKAN AND GOA TO PROTECT SEA TRADE & IT WAS SO STRONG THAT THE MARATHAS COULD HOLD THEIR DOMINANCE AGAINST THE BRITISH, PORTUGUESE AND DUTCH

COASTLINE - 720 KMS
EEZ - 1,12,000 KM² (APPX)
CONTINENTAL SHELF- 89,096 KM²
COASTAL DISTRICTS - 6
MAJOR PORTS - 2
MINOR/ INTERMEDIATE PORTS - 48
MARINE FISHERMEN - 3,86,259
MARINE FISH PRD'ON - 4.33 MT

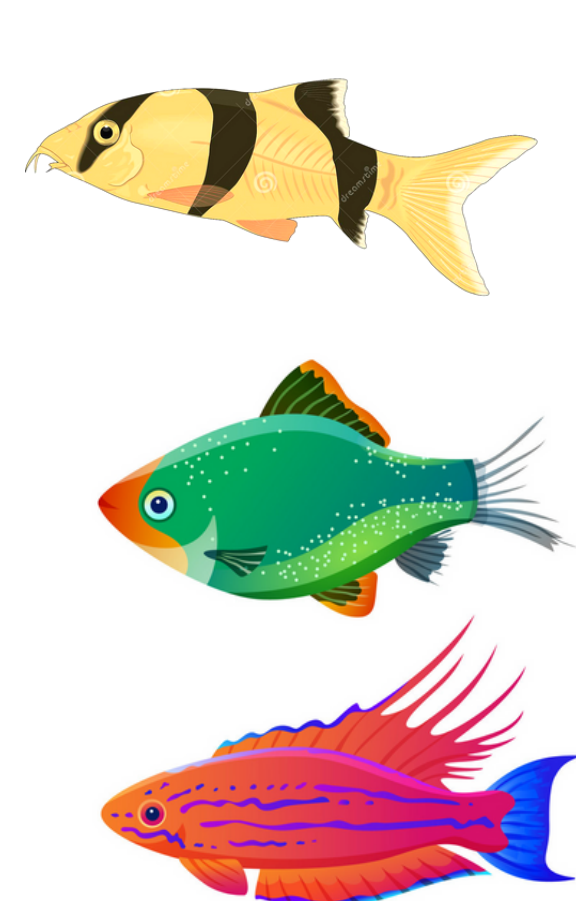
TOTAL INLAND WATER BODIES - 3.83 LAKH HECTARES
2.99 LAKH HA - RESERVOIRS
8.8 LAKH HA - WETLANDS
19456 KM - RIVERS STRETCH
0.12 LAKH HA - BRAK. WATER
11,31,969 - INLAND FISHERMEN
1.57 MT- INLAND FISH PRD'ON



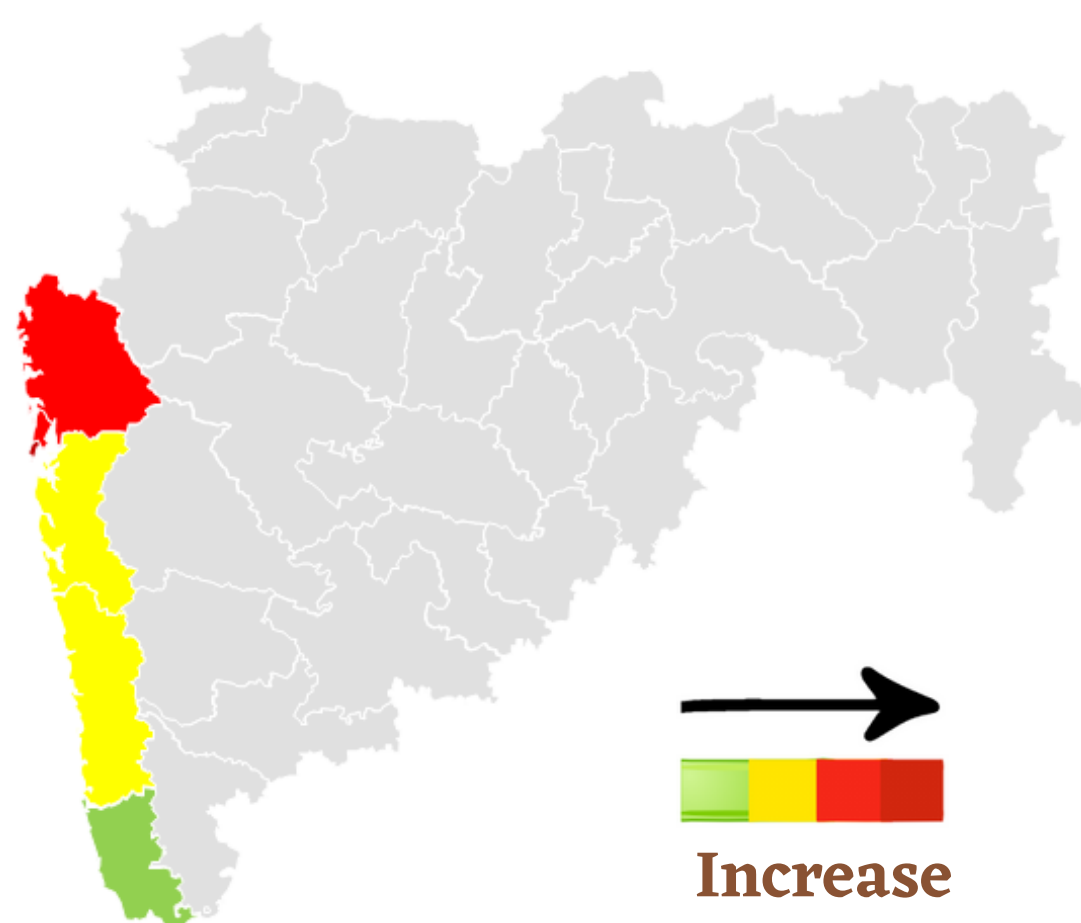
Ups & Downs - Decadal Fish Production Analysis



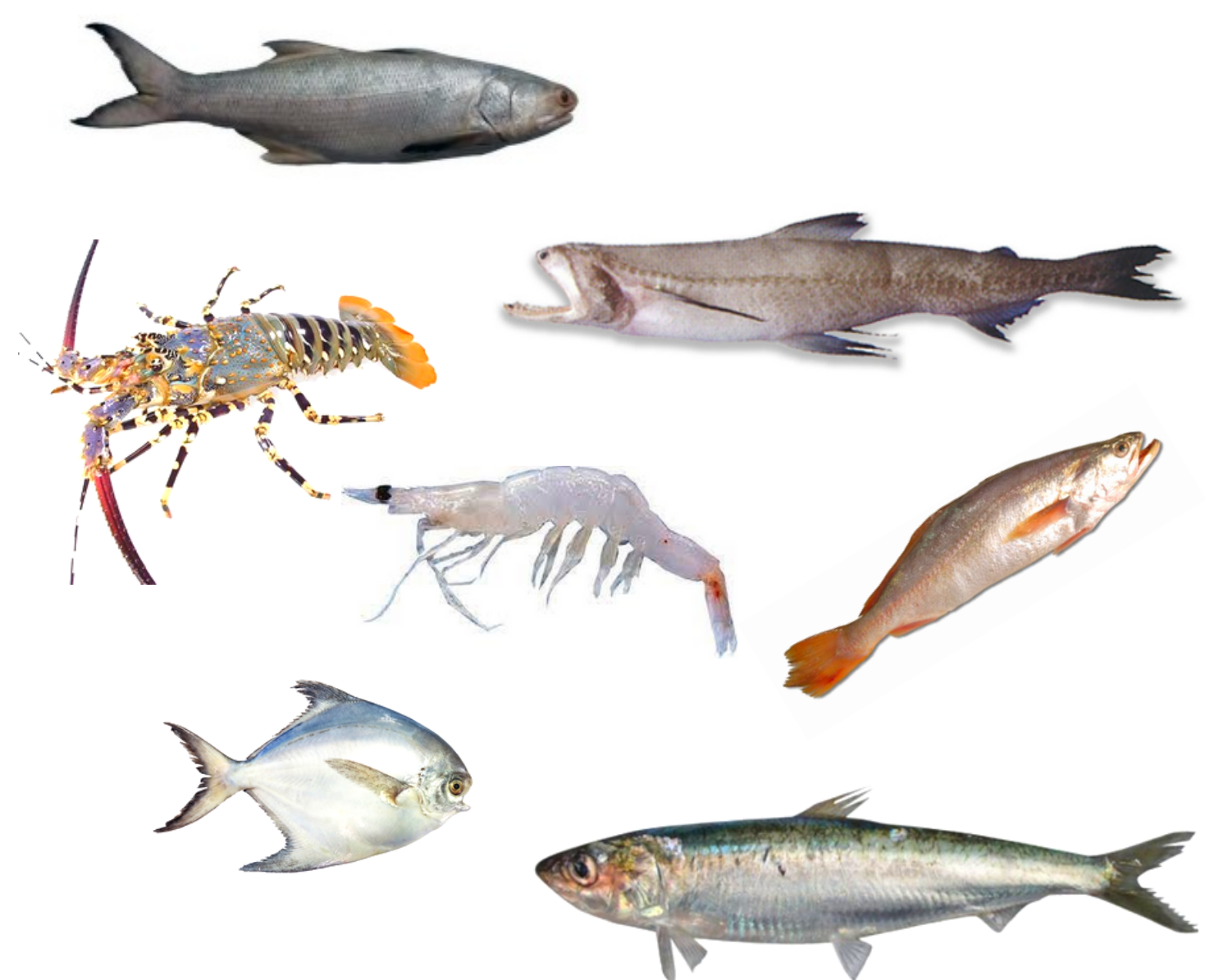
Marine Landings Map of Maharashtra (2000-2020)



Has rich freshwater fish genetic resources and constitutes 31.01 % to the freshwater fish diversity of India with 165 species

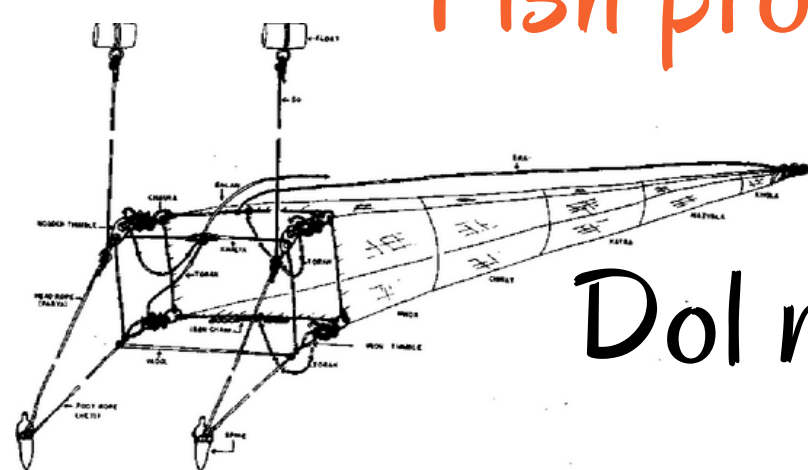


Fish production pattern



Major Marine Resources over the years

One of the Oldest Indigenous fishing communities of the country, The Kolis resides here in Mumbai



Dol netting is a very popular traditional, passive technique of fishing practiced in Maharashtra



Yearly Fish Consumption (Per Capita) - 3.02 kg



World's third-largest crater lake & a Ramsar site - Lonar Lake is present here



Highest fish production - Mumbai city

Source: Handbook of fisheries statistics- 2020 ; CMFRI annual report- 2020

Prepared by

Asha T Landge, B. Chanikya Naidu, S. Abuthagir Iburahim

Published by

Aquatic Biodiversity Museum,

ICAR-Central Institute of Fisheries Education, Mumbai

